



University of
St Andrews

FOUNDED
1413

Overview of Access and Widening Participation at the University of St Andrews

Lauren Henderson

Access Manager: Schools Outreach and Engagement

lich1@st-andrews.ac.uk

What is Widening Participation?

Background:

In the 2014-15, the Scottish Government set out its ambition that every child, irrespective of socio-economic background, should have an equal chance of accessing higher education.

This Commission on Widening Access was established to advise Ministers on the steps necessary to achieve this.





Widening Participation Policy

www.st-andrews.ac.uk

Why is it important?

- **Scottish Government created Commission On Widening Access in 2014**
- **A Blueprint for Fairness – 2016 – Scottish Government Report**
- By 2030, students from the 20% most deprived backgrounds should represent 20% of entrants to higher education. Equality of access should be seen in both the college sector and the university sector.

Interim Targets - By 2021 – students from the 20% most deprived backgrounds should represent at least 10% of full-time first-degree entrants to Scottish universities as a whole.

By 2026, students from the 20% most deprived backgrounds should represent at least 18% of full-time first-degree entrants to Scottish universities.



Why is it important?

Scottish Index of Multiple Deprivation (SIMD)

- SIMD is used for analysis in Access. SIMD is a measure of deprivation that is used across the public sector in Scotland.

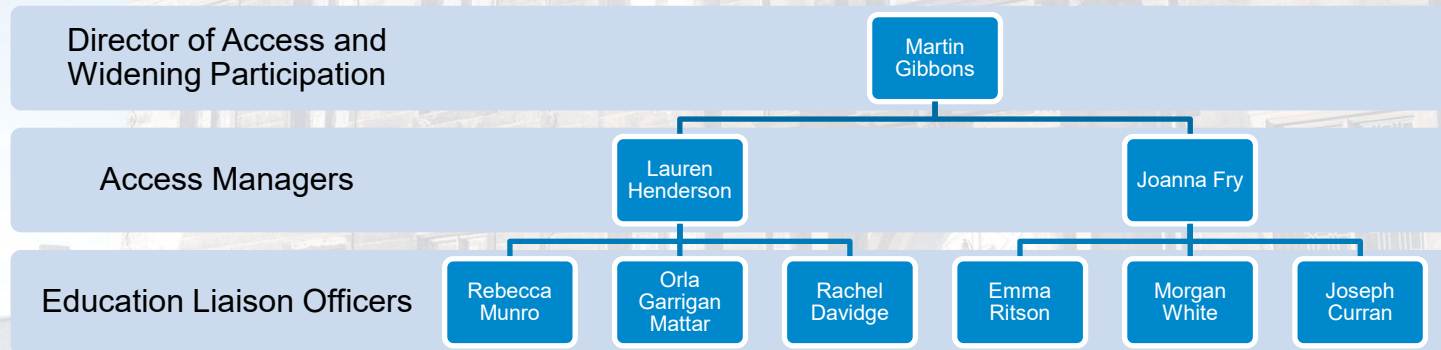
- Our own principal led the working group on University Admissions and bringing in minimum requirements and contextual admissions
- Contextual Admissions Policy at St Andrews - <https://www.st-andrews.ac.uk/study/policy/contextual-data/>

SIMD Postcode Checker - <https://simd.scot/>



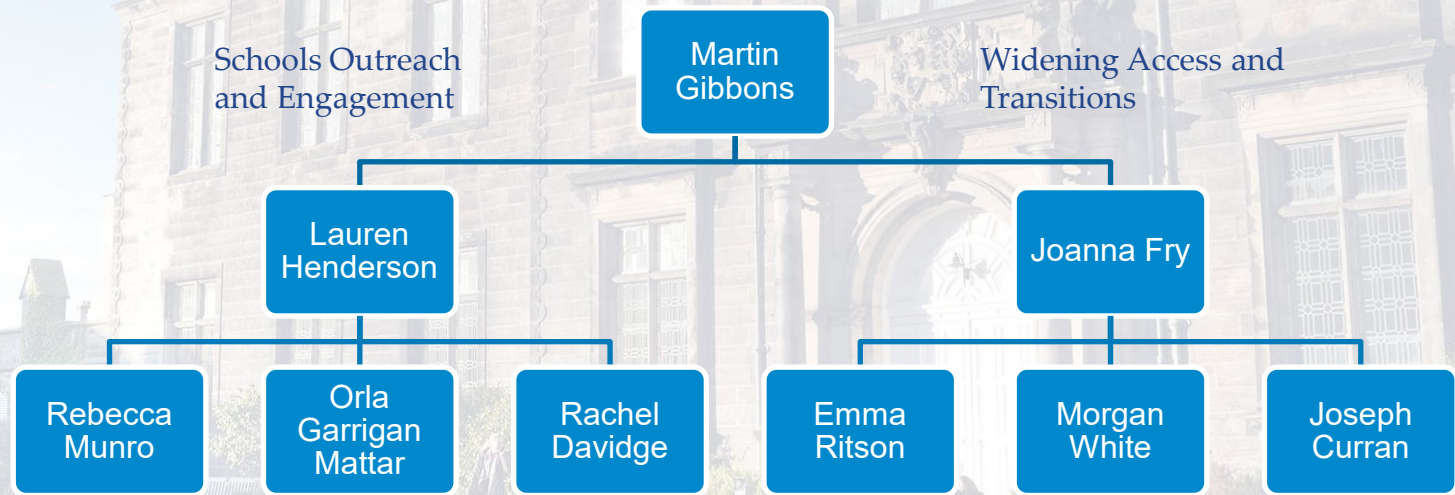


Access and Widening Participation Team





Access and Widening Participation Team: Schools Outreach and Engagement/Widening Access and Transitions



Schools Outreach and Engagement – Access & Outreach Programmes

First Chances Fife



A programme that aims to raise the aspirations and achievements of pupils in Fife as they progress through their education. The programme works with students from P7 to S6 and continues to support them into further and higher education.

Foundation (P7-S3)
Senior Phase (S4-S6)

Reach St Andrews



Reach Scotland is a national programme, established through support from the Scottish Funding Council, with the overall aim of widening participation in high demand professions.

Five universities facilitate Reach, and each university covers a different region of Scotland:

- **University of Aberdeen** - Law, Medicine
- **University of Dundee** - Medicine, Law, Dentistry
- **University of Edinburgh** - Law, Medicine, Veterinary Medicine
- **University of Glasgow** - Dentistry, Law, Medicine and Veterinary Medicine
- **University of St Andrews** - Medicine, Economics, Management, Psychology

Access for Rural Communities

- Argyll and Bute
- Highlands
- Eilean Siar (Western Isles)
- Shetland and Orkney

Working with S4 to S6 pupils, the ARC project provides a platform for pupils to explore opportunities in higher education in rural communities across Scotland.

ARC members will receive support and guidance throughout the university application process, aiming to give pupils the tools, know-how and confidence to stretch themselves and succeed in higher education.

Sutton Trust Summer School



The Sutton Trust has been in partnership with the University of St Andrews for over 20 years.

- 140 places
- Open to S5 pupils in Scotland, Year 12 in England and Wales and Year 13 Northern Ireland
- Eligibility to apply and Care-Experienced young people guaranteed a place

Widening Access and Transitions – Supported Pathways

Gateway Programmes

- **Gateway to Arts**
- **Gateway to Science**
- **Gateway to Medicine**

Our Gateway programmes are each specifically designed to offer additional support and guidance for students. Each programme is specially tailored to the subject area it represents.

- The purpose of Gateway programmes is to promote the uptake of higher education among those groups that are traditionally under-represented at university.
- The Gateway programmes have been designed to help those who have experienced some disadvantage in their schooling gain entry to the University.

FE-HE Programmes

- **FE-HE Pathway to Arts**
- **FE-HE Pathway to Science**

FE-HE Pathway to Arts and FE-HE Pathway to Science provide supported entry routes into degree-level study at St Andrews for students studying alternative qualifications at further education colleges across Scotland.

MA Combined Studies

- **Daytime Study**
- **Evening Study**

- Study during the day or in the evening
- Study a different module for 12 weeks
- Between 4 years and 8 years to complete

Entry requirements for the MA Combined Studies can be quite flexible.

- Recent study, and those who have not taken any formal qualifications since leaving school.
- We will consider work experience, professional qualifications and other forms of evidence of ability to study in lieu of a recent formal qualification.



University of
St Andrews

Contact us: schools.access@st-andrews.ac.uk

www.st-andrews.ac.uk